



Assembling the Slot.it LMP pickup

Installing the latest CH88b type LMP pickup in your Slot.it cars is straightforward... once you know how to do it!



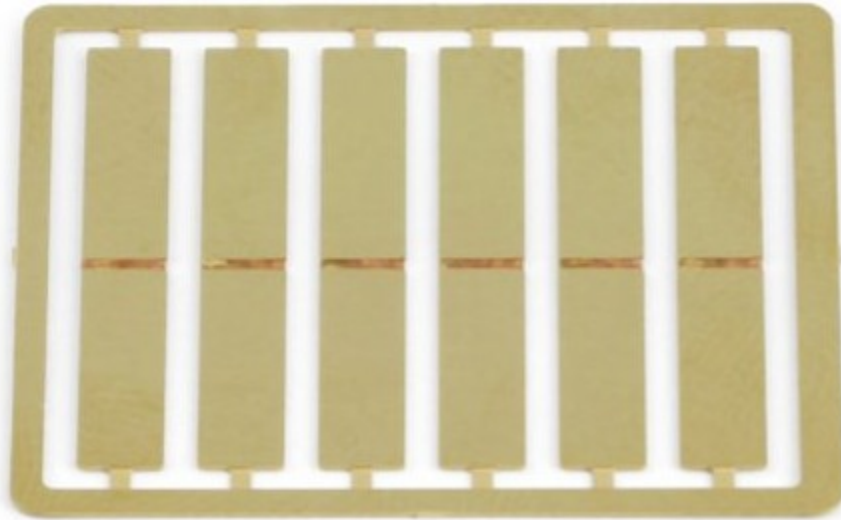
CH88b includes one screw type LMP pickup, two eyelets, two M2 3mm long grub screw, one pickup washer, one pickup screw, and two brass tabs.

CH88b is compatible with your preferred type of braid and it doesn't require any extra work on the braid itself

There are two possible alternative ways to use the parts.

Assembling with the brass strips

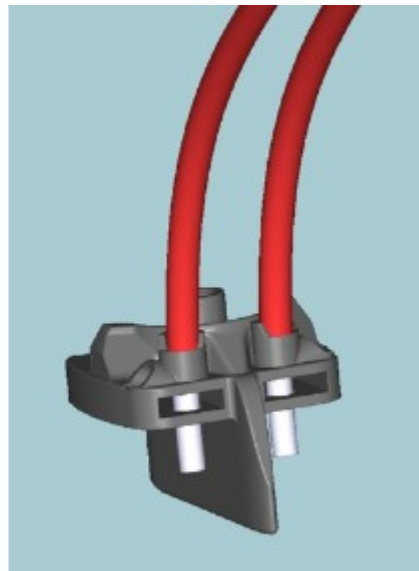
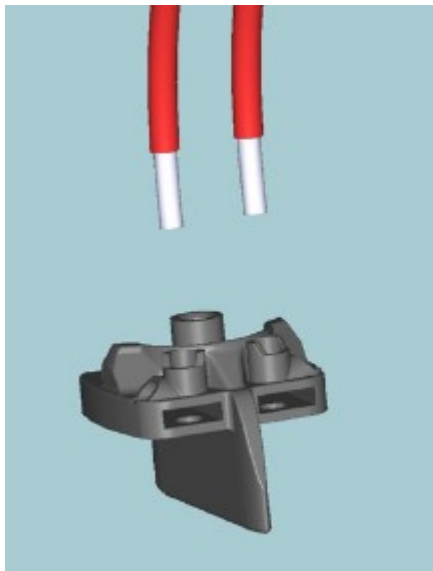
Two brass strips are provided together with the CH88b pickup. They are also available separately with code **SP37**



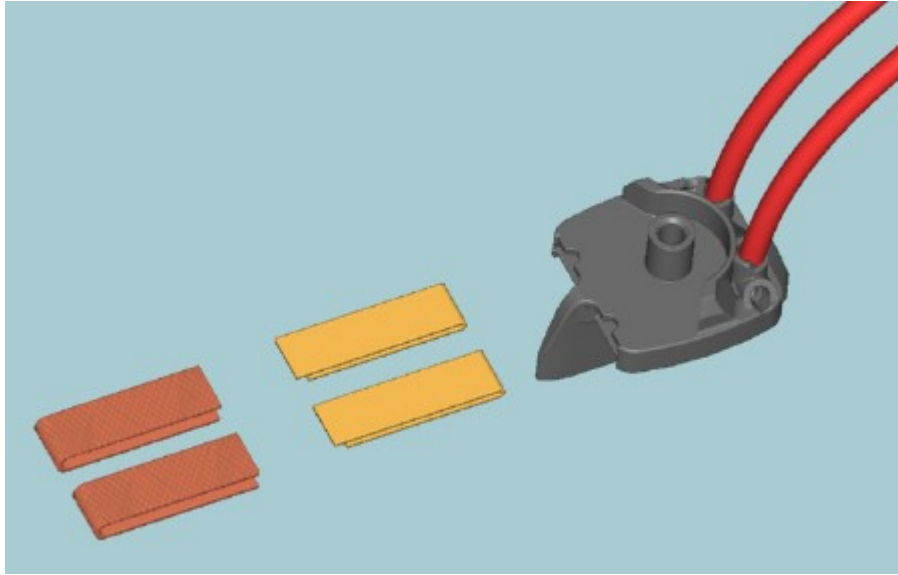
Their purpose is to be folded around the braid to keep it safely in place, making contact with the stripped wire at the same time.

Follow these simple steps:

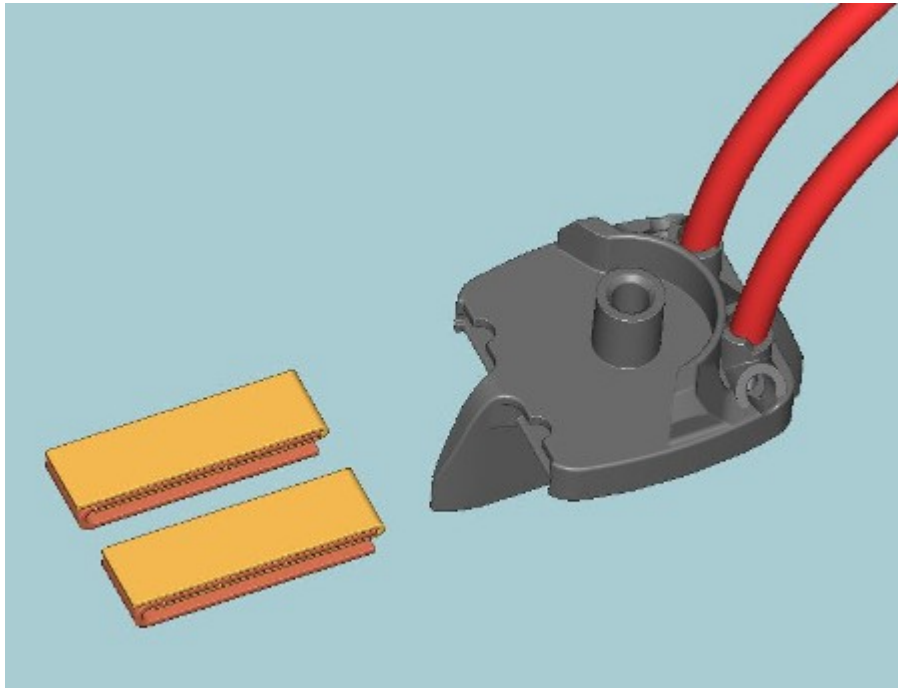
1. Strip the wires, and insert them in the vertical holes of the pickup itself (the holes nearest to the middle of the part)



2. bend the brass tabs following the pre-etched middle line, and wrap them around the braid. Keep the longest part of the tab UP.



3. insert the brass tabs (and the braid they are wrapped around to) in the pickup



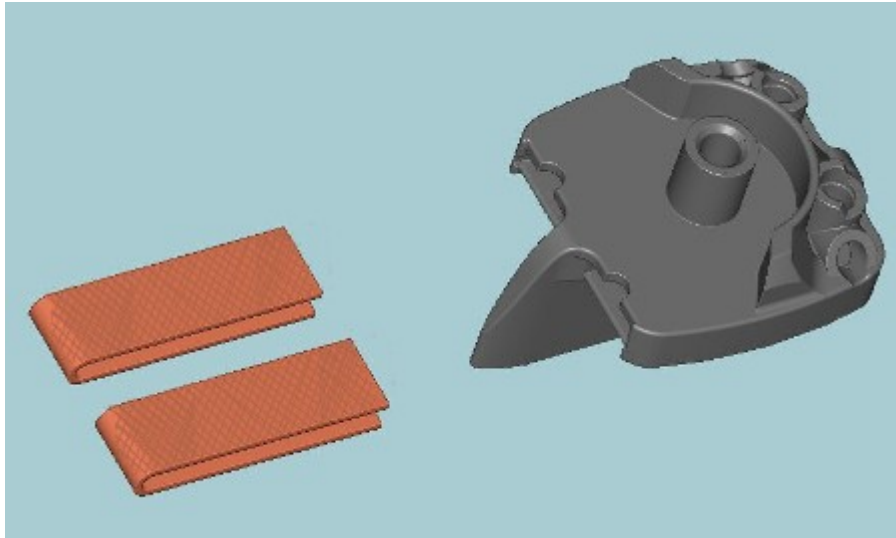
4. press the tabs all the way until they are aligned with the pickup edges. Trim off extra wire from the rear end of the pickup.



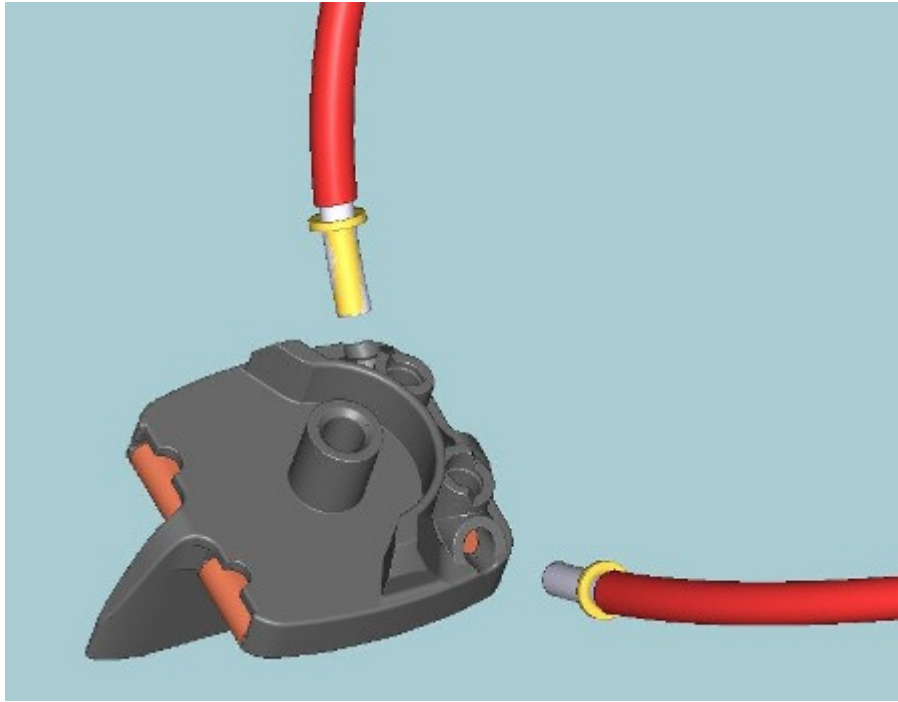
Pickup can now be secured in place with the provided washer and screw.

Alternative method: assembling with eyelets and grub screws.

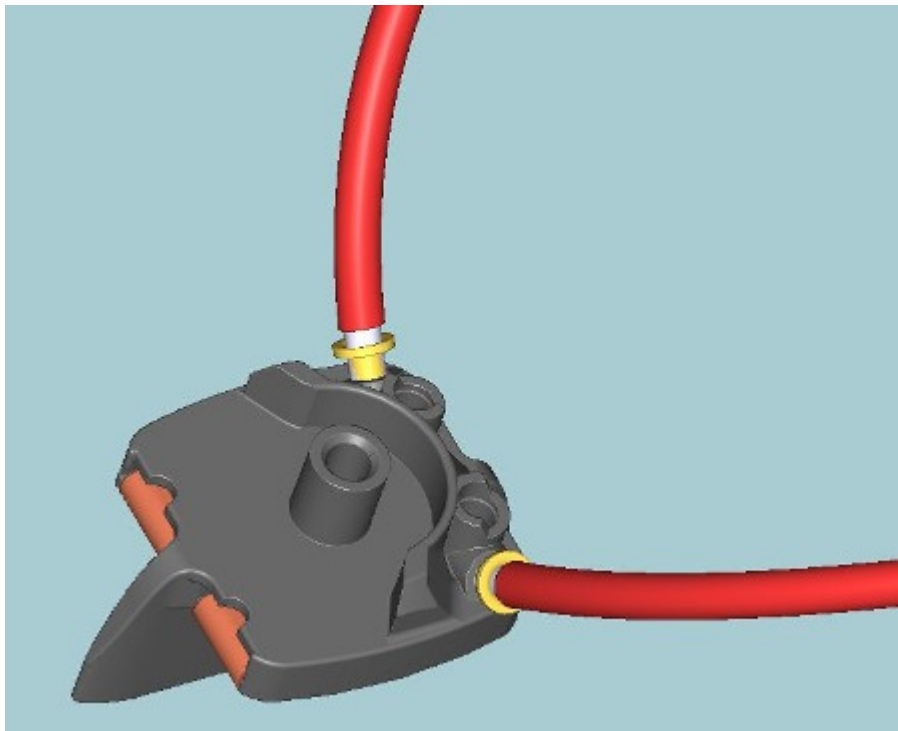
1. Insert the braid in the pickup until it reaches the rear end of the pickup and bend it in place.



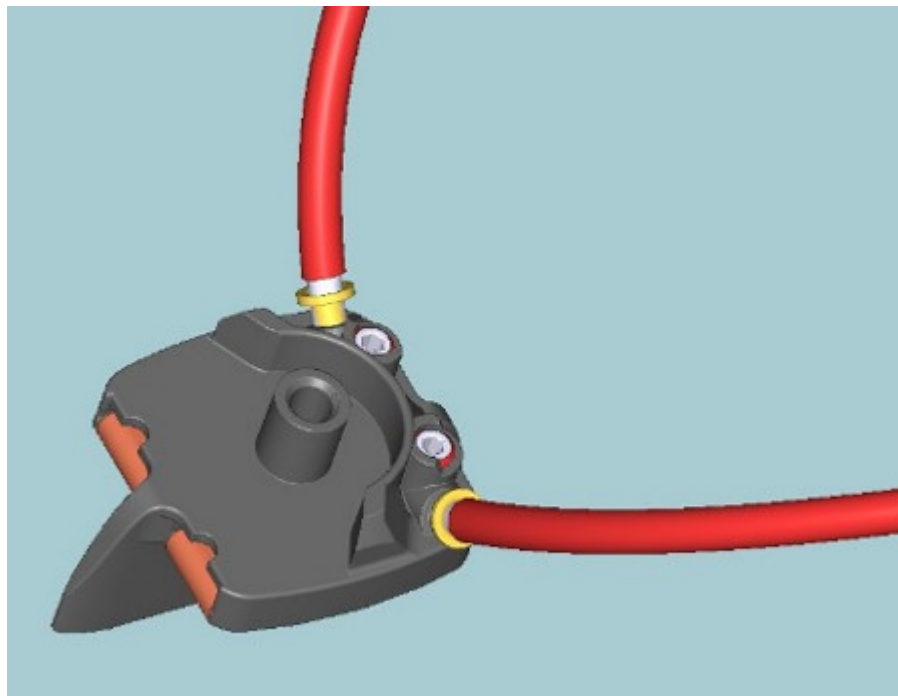
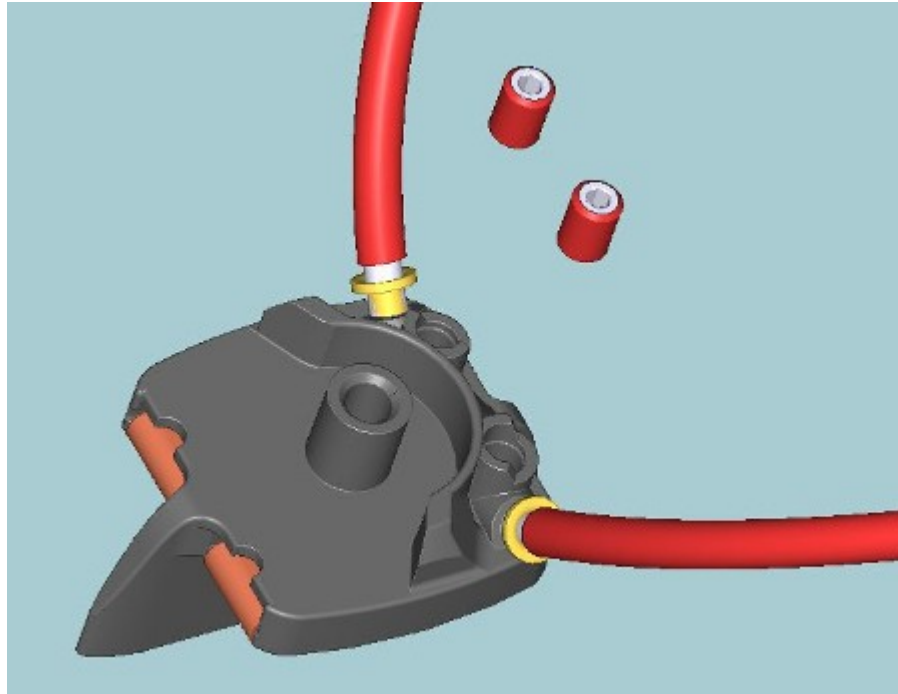
2. Insert the eyelets on the stripped cable, bend the stripped wire around the eyelet to keep it in place, and press the eyelet into the pickup using the angled hole (the external one)



3. Press the eyelets tight on the braid



4. Secure braid and wire in place with the grub screws



Pickup can now be secured in place with the provided washer and screw.